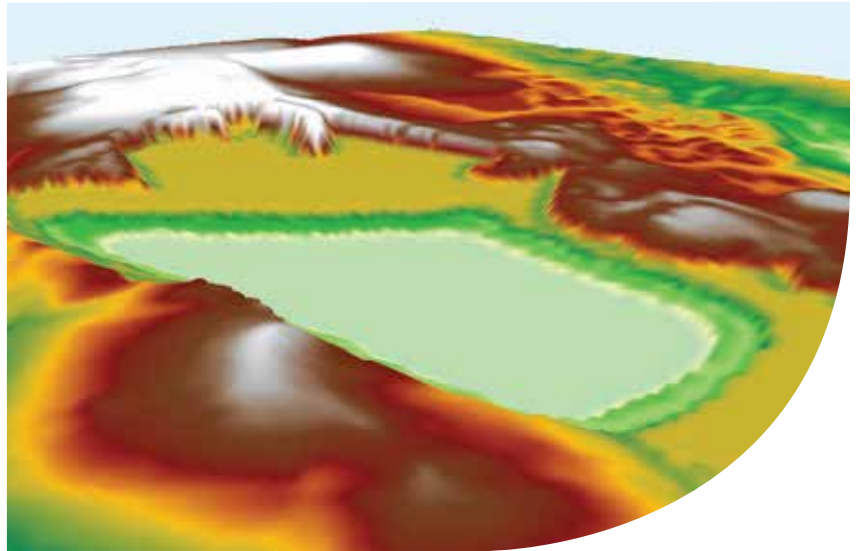
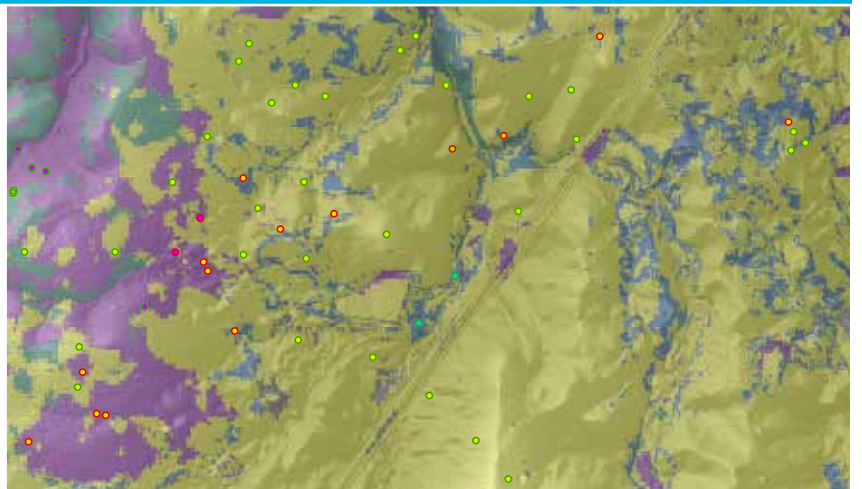
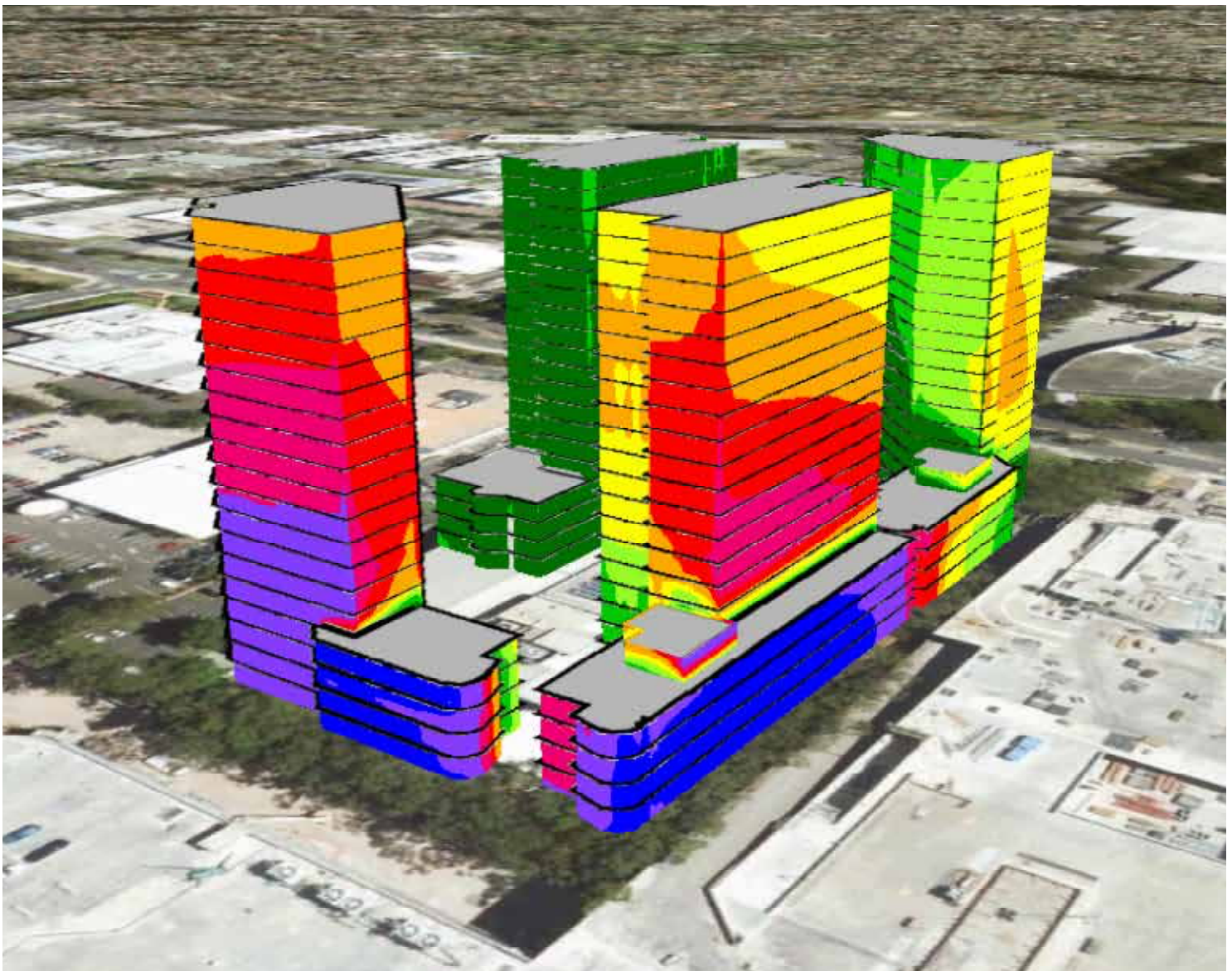


Spatial Systems and Data Management



For a range of sectors, we have a wealth of experience in tailoring innovative GIS solutions including intelligent spatial analysis, high quality mapping and design, setup and management of spatial information systems.



For a range of service areas, we have a wealth of experience in tailoring innovative GIS solutions including intelligent spatial analysis, high quality mapping and design, setup and management of spatial information systems. Our team has provided these services on small and large projects from inception to completion, and work with integrity, dedication and commitment to offer timeliness and consistent quality.

EMM's SPATIAL SYSTEMS AND DATA MANAGEMENT SERVICES

- Spatial data management
- Terrain and landform modelling
- Field capture and mobile mapping
- Constraints analysis
- Mapping
- Data conversion
- Web-based mapping portals

Antony has over 15 years of experience across the environmental, mining, transport, planning and resources sectors.



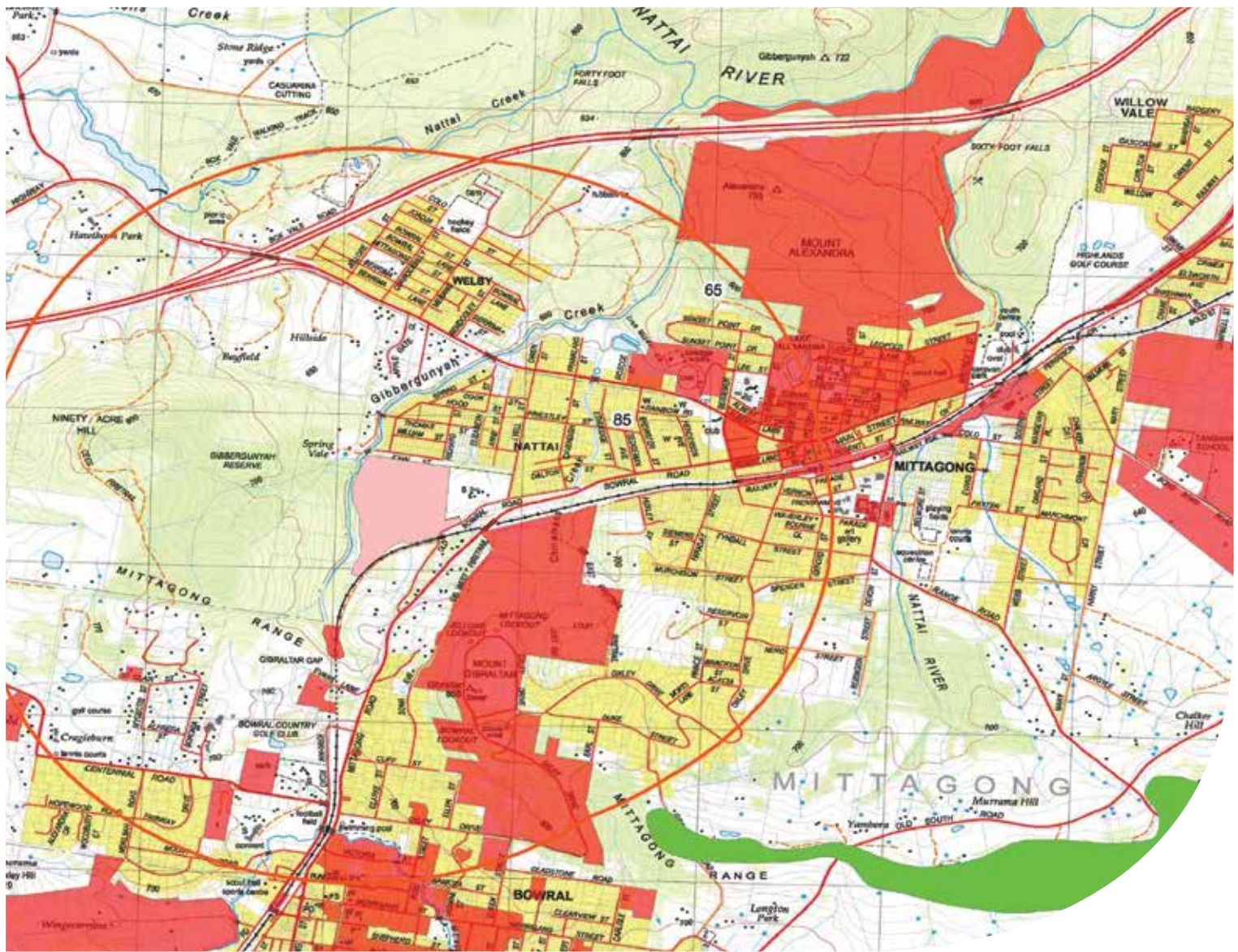
OUR PEOPLE

The GIS team is led by:

Antony Edenhofner BScAppGeo (Hons) – GIS Service Team Leader

Antony is a senior GIS analyst and environmental scientist with extensive experience in using spatial systems as an asset and document management tool.

Antony's skills include database setup and management, data interpretation and verification, spatial and constraints analysis, options assessment, concept planning, asset management, web-mapping and data delivery, mobile mapping and data capture; and 3D modelling for viewshed analysis, bushfire assessment, landform design and fly-throughs.



Jackie Clifford BA (Geography and Environmental Science) – Senior GIS Analyst

Jackie is a GIS and spatial systems specialist with a decade of experience in data management, spatial analysis and cartographic operations.

She has been involved in a number of transport, infrastructure, environment and defence projects, and she specialises in performing complex spatial analysis as well as producing high-quality maps.

Her broad academic experience across the geography and environmental science fields are highly complementary to her technical GIS skills, allowing her to provide further insight into a range of GIS applications.

Roshni Sharma BEnvSciMgt (Hons), MAppSci (Geosciences), MScTech (Spatial Information) – GIS Analyst

Roshni is a GIS Analyst with a strong background in providing geospatial and cartographic solutions in the environmental science and management fields.

Roshni has a broad base of academic skills and

experience. She is dedicated to providing quality services to clients, and has produced excellent results in a number of resource, planning, constraints analysis and spatial data management projects.

Roshni’s skills include spatial data management, complex spatial analysis and modelling, geostatistical analysis, remote sensing and aerial photo interpretation.

Peter Tolley BBiotech (Hons), MSciTechEnvSci (Environmental Science), GradDip (Spatial Information) – GIS Analyst

Peter is a GIS Analyst and Environmental Scientist with experience in providing geospatial solutions to major water and wastewater infrastructure projects, and bushfire, ecology and planning projects.

Peter has a broad background in environmental science from both an academic (molecular ecology and conservation genetics) and industry (environmental impact assessment) standpoint.

Peter’s skills include spatial data management, asset management, opportunities and constraints analysis, options assessment and quality cartographic output.



SYDNEY

Ground floor, Suite 01, 20 Chandos Street
St Leonards, New South Wales, 2065
T 02 9493 9500 F 02 9493 9599

NEWCASTLE

Level 1, Suite 6, 146 Hunter Street
Newcastle, New South Wales, 2300
T 02 4907 4800 F 02 4907 4899

BRISBANE

Level 4, Suite 01, 87 Wickham Terrace
Spring Hill, Queensland, 4000
T 07 3839 1800 F 07 3839 1866

ADELAIDE

Level 1, 70 Pirie Street
Adelaide, South Australia, 5000
T 08 8232 2253



PROJECT EXAMPLES

GIS Data Management Services

Client: Glencore Coal Assets Australia

EMM provides GIS support for a number of Glencore operations across New South Wales and Queensland, including Mangoola Coal, Ravensworth Operations, Glendell-Mount Owen Complex and Oaky Creek Coal. All spatial data is verified and transferred to a new GIS.

A GIS Management Plan was also developed for each site, to provide detailed background and procedures for the operation and maintenance of the GIS in accordance with GCAA protocols.

Large scale constraints analysis and mapping

Clients: Kembla Watertech, Lendlease

EMM offers quality constraints analysis for complex sites spread across large areas, and specialises in collating and managing immense volumes of spatial data.

We have provided these services for the classification of Sydney Water assets for the Sewefix program, performing rapid classification and mapping of thousands of assets in the Sydney and Wollongong areas. We have also provided complex ecological and heritage constraints analysis and mapping services to Lendlease for 169 of their sites throughout Australia.

Pedestrian Catchment Mapping

Client: Penrith Council

EMM conducted a walkability network analysis on fourteen suburbs in Penrith Council to assess pedestrian accessibility to open spaces. The results were mapped to show areas which were within 400 m walking distance of one, two and over two open spaces.

The results of these analyses give a useful indication of the current open space provision and pedestrian network accessibility in the study area. This is useful for future planning and decision making.